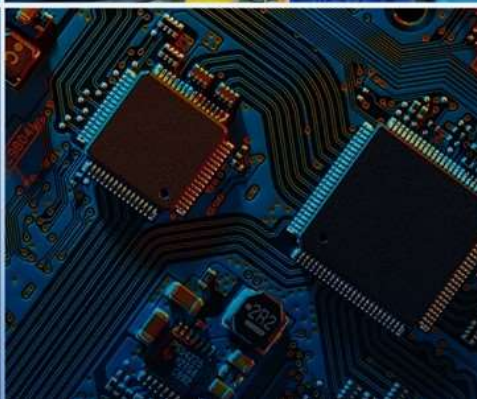


# SSW900 Advanced Soft Starters



Driving efficiency and sustainability

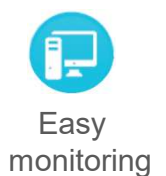
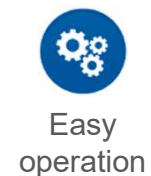
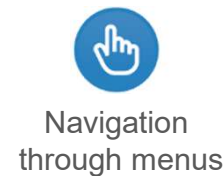


Name  
Date

# Overview



- 10.0 to 1400A (6 to 1000 HP @ 380V)
- Power supply: 220 to 575 V
- Inputs and outputs with programmable functions
  - 5 isolated digital inputs
  - 1 analog output 0-10 V DC/4-20 mA
  - 1 input for thermistor
  - 1 relay output 1.0 A/240 V AC
- Lead free – RoHS, conformal coated circuit boards
- Real time clock
- (3) Braking Methods: reverse, optimal, DC braking
- Fire mode (emergency start)



# Overview



- Modern, flexible and easy to use
- (3) Selectable Languages
- Oriented Start Up and Help Options
- 2 independent slots to connect plug-in modules
- Advanced, Detachable HMI offering copy and download of parameters, Bluetooth, and USB connectivity
- Ambient temperature up to 55°C without current derating
- Directly mounted on DIN rail or with screws (frames A and B)
- Embedded SoftPLC capability
- Utilizes WEG's no cost WPS configuration and SoftPLC programming software



# Common Applications and Industries



Cement and Mining



Chemical and Petrochemical



Wood Processing



Plastic and Rubber



Water & Wastewater



Food and Beverage



Ceramic



Steel and Metallurgy

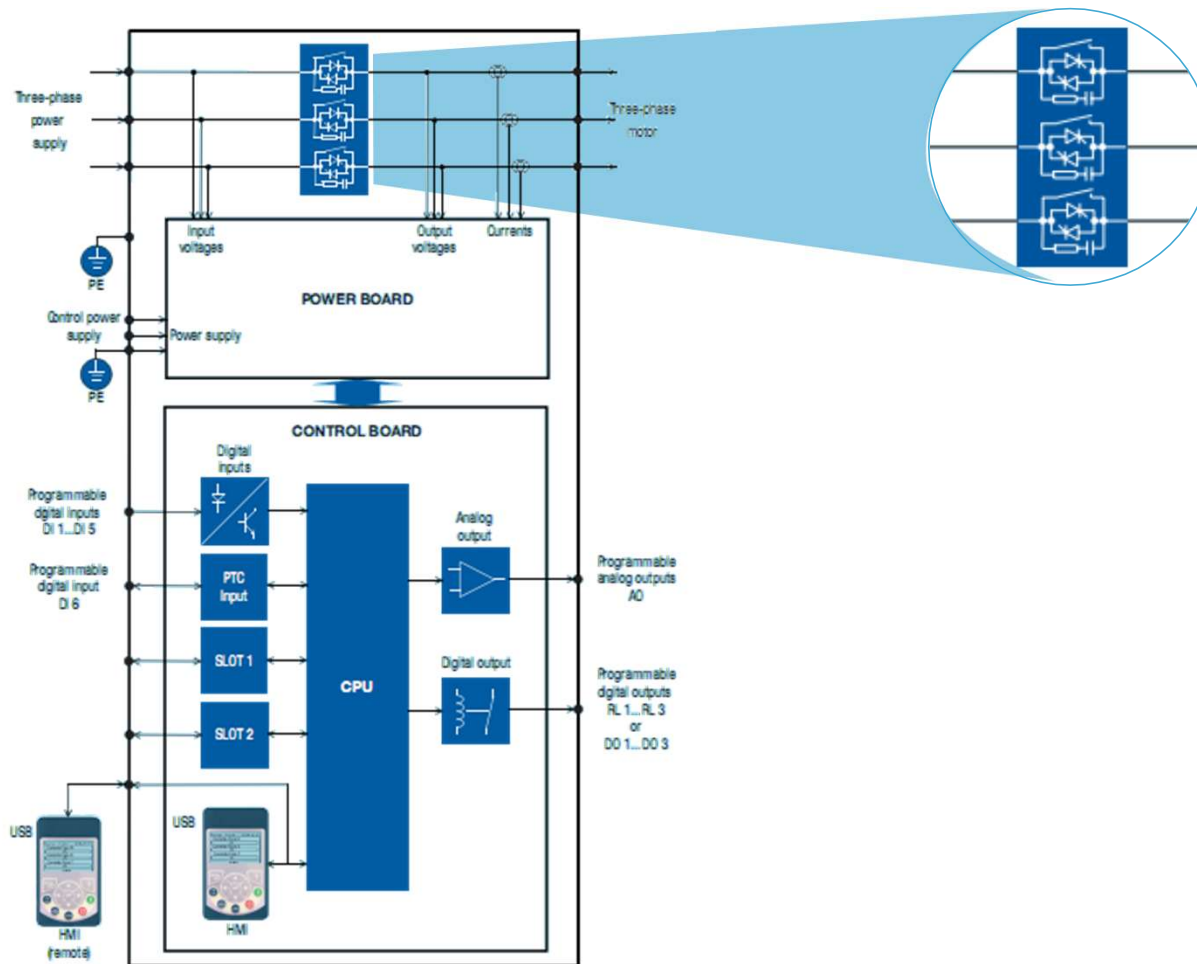


Glass



Textile

# Standard Features and Ratings

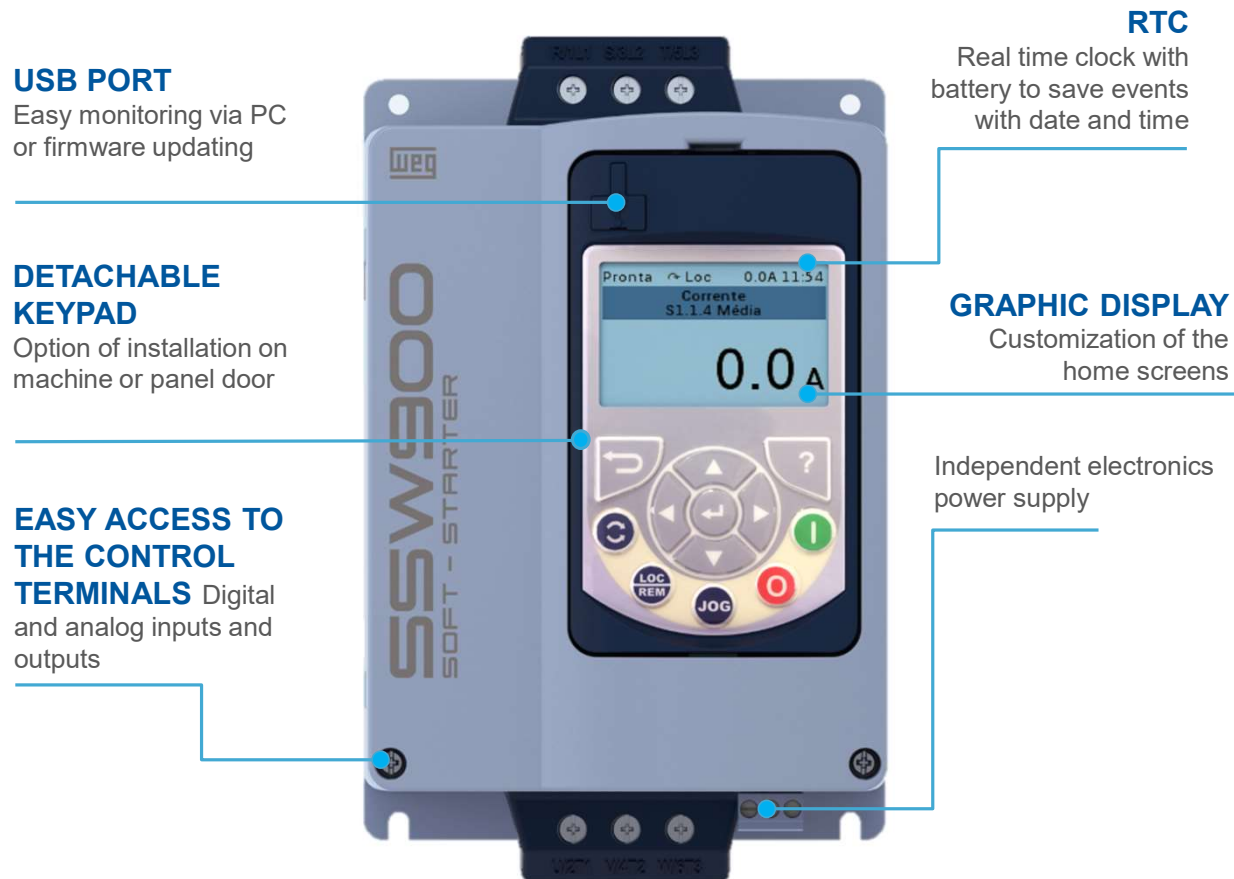


- Advanced, Solid-State Soft Starter
- Internal AC1 Run Bypass Standard





# Standard Features and Ratings



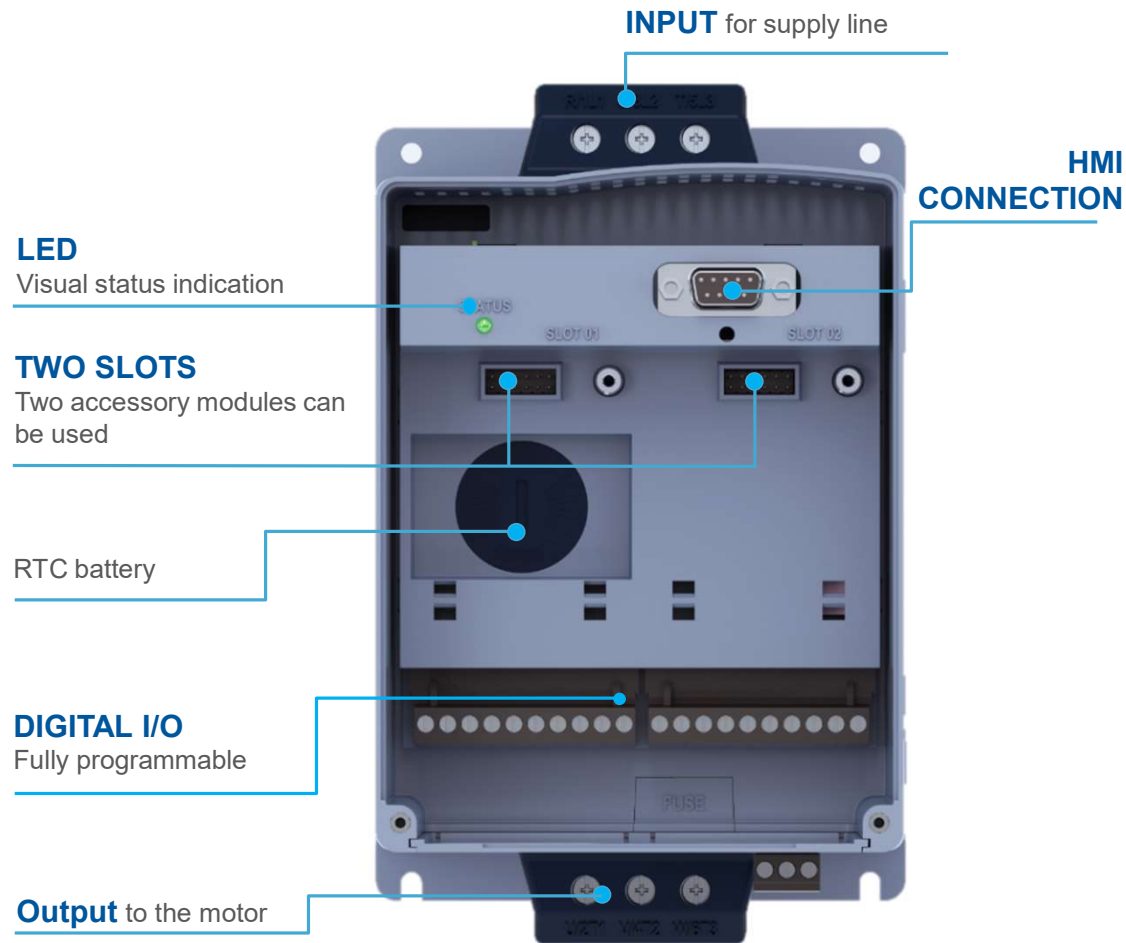
# Standard Features and Ratings



- Advanced Graphical Keypad
- Embedded Bluetooth Communications
- Front access USB Port



# Standard Features and Ratings

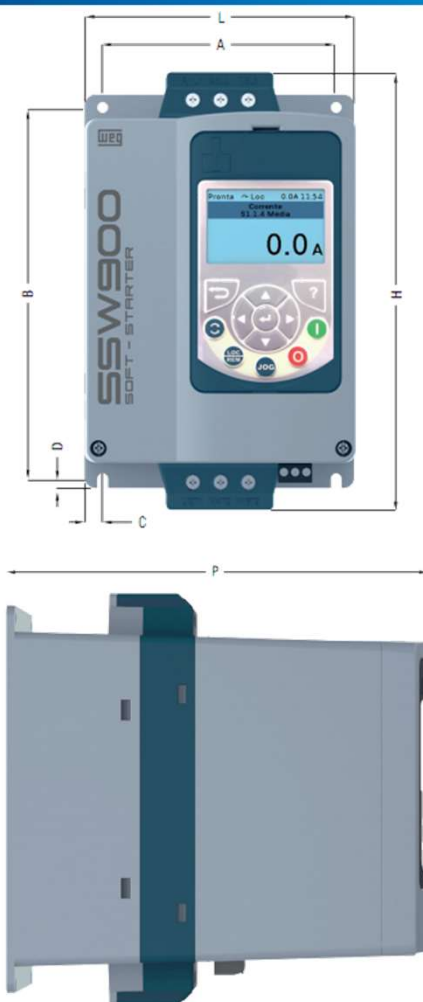




# Standard Features and Ratings



# Standard Features and Ratings



Frame size	Height (H) mm (in)	Width (W) mm (in)	Depth (P) mm (in)	(A) mm (in)	(B) mm (in)	(C) mm (in)	(D) mm (in)	Fastening screw	Weight (kg) (lb)	Degree of protection
A	200 (7.87)	127 (5)	203 (7.99)	110 (7.33)	175 (6.88)	8.5 (0.33)	4.3 (0.16)	M4	1.93 (4.25)	IP20
B	208 (8.18)	144 (5.66)	260 (10.23)	132 (5.19)	148 (5.82)	6 (0.23)	3.4 (0.13)	M4	4.02 (8.86)	IP20
C	276 (10.86)	223 (8.77)	261 (10.27)	208 (8.18)	210 (8.26)	7.5 (0.29)	5 (0.19)	M5	6.55 (14.44)	IP20 <sup>1)</sup>
D	331 (13.03)	227 (8.93)	282 (11.10)	200 (7.87)	280 (11.02)	15 (0.59)	9 (0.35)	M8	12.83 (28.28)	IP20 <sup>1)</sup>
E	575 (22.63)	390 (15.35)	260 (10.23)	270 (10.62)	480 (18.89)	56 (2.20)	10 (0.40)	M8	38 (83.75)	IP00
F	760 (29.92)	464 (18.27)	316 (12.44)	320 (12.60)	625 (24.61)	72 (2.83)	10 (0.39)	M8	75.40 (166.23)	IP00
G	914 (35.98)	539 (21.22)	316 (12.44)	369 (14.53)	732 (28.82)	85 (3.35)	12 (0.47)	M10	107.20 (236.34)	IP00

Note: IP20 with optional kit.

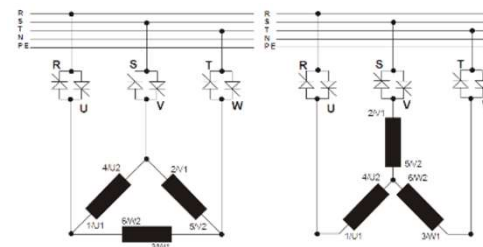
# Standard Features and Ratings



Ratings for standard connection with three cables (typical WEG motor ratings):

Part number	Rated current (A)	Motor voltage 220/230 V		Motor voltage 380/400 V		Motor voltage 440/460 V		Motor voltage 525 V		Motor voltage 575 V	
	A	cv	kW	cv	kW	cv	kW	cv	kW	cv	kW
SSW900A0010T5E2	10	3	2.2	6	4.5	7.5	5.5	7.5	5.5	10	7.5
SSW900A0017T5E2	17	6	4.5	10	7.5	12.5	9.2	15	11	15	11
SSW900A0024T5E2	24	7.5	5.5	15	11	15	11	20	15	20	15
SSW900A0030T5E2	30	10	7.5	20	15	20	15	25	18.5	30	22
SSW900B0045T5E2	45	15	11	30	22	30	22	40	30	40	30
SSW900B0061T5E2	61	20	15	40	30	50	37	50	37	60	45
SSW900B0085T5E2	85	30	22	60	45	60	45	75	55	75	55
SSW900B0105T5E2	105	40	30	75	55	75	55	75	55	100	75
SSW900C0130T5E2	130	50	37	75	55	100	75	125	90	125	90
SSW900C0171T5E2	171	60	45	125	90	125	90	150	110	175	132
SSW900C0200T5E2	200	75	55	150	110	150	110	200	150	200	150
SSW900D0255T5Ex <sup>1)</sup>	255	100	75	175	132	200	150	250	185	250	185
SSW900D0312T5Ex <sup>1)</sup>	312	125	90	200	150	250	185	300	220	300	220
SSW900D0365T5Ex <sup>1)</sup>	365	150	110	250	185	300	225	350	260	400	300
SSW900D0412T5Ex <sup>1)</sup>	412	150	110	300	220	350	260	440	315	450	330
SSW900E0480T5Ex <sup>1)</sup>	480	200	150	350	260	400	300	500	370	500	370
SSW900E0604T5Ex <sup>1)</sup>	604	250	185	450	330	500	370	600	450	650	485
SSW900E0670T5Ex <sup>1)</sup>	670	250	185	500	370	550	410	650	485	750	550

Notes: 1) To select a SSW900 model with control voltage 110-130 V, replace "x" by 3 and to select a model with control voltage 220-240, replace "x" by 4;  
Models ≤412 A: AC-53b 3-30;330, ambient temperature of 55 °C;  
Models ≥480 A: AC-53b 3-30;690, ambient temperature of 40 °C;  
Models of 45 A to 200 A: with ventilation kit;  
WEG motors Premium or Plus, IV poles.



# Standard Features and Ratings



Ratings for standard connection with six cables (typical WEG motor ratings:

Model SSW900	Maximum applicable motor										
	Rated current (A)	Motor voltage 220/230 V		Motor voltage 380/400 V		Motor voltage 440/460 V		Motor voltage 525 V		Motor voltage 575 V	
	A	cv	kW	cv	kW	cv	kW	cv	kW	cv	kW
SSW900C0130T5E2	225	75	55	150	110	175	132	200	150	250	185
SSW900C0171T5E2	296	125	90	200	150	200	150	250	185	300	220
SSW900C0200T5E2	346	150	110	250	185	300	220	300	220	350	260
SSW900D0255T5Ex <sup>1)</sup>	441	175	132	300	220	350	260	400	300	450	330
SSW900D0312T5Ex <sup>1)</sup>	540	200	150	350	260	450	330	500	370	550	410
SSW900D0365T5Ex <sup>1)</sup>	631	250	185	450	330	500	370	600	450	650	485
SSW900D0412T5Ex <sup>1)</sup>	713	250	185	500	370	600	450	700	525	800	600
SSW900E0480T5Ex <sup>1)</sup>	831	350	260	600	450	700	525	800	600	900	670
SSW900E0604T5Ex <sup>1)</sup>	1,046	450	330	750	550	850	630	1,050	775	1,150	820
SSW900E0670T5Ex <sup>1)</sup>	1,160	500	370	850	630	950	700	1,150	820	1,250	920

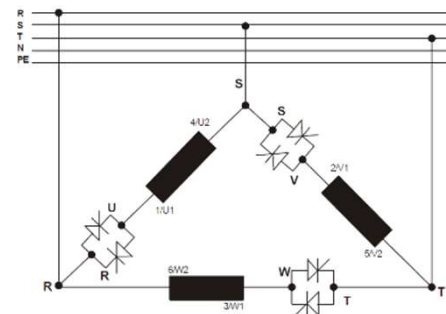
Notes: 1) To select a SSW900 model with control voltage 110-130 V, replace "x" by 3 and to select a model with control voltage 220-240, replace "x" by 4;

Models ≤412 A: AC-53b 3-25:335, ambient temperature of 55 °C;

Models ≥480 A: AC-53b 3-25:695, ambient temperature of 40 °C;

Models of 130 A to 200 A: with ventilation kit;

WEG motors Premium or Plus, IV poles.



# Sizing and Selecting



**Consider the following when Sizing WEG Soft Starters:**

- Application (load type)
- Motor nameplate data
- "Torque x speed" load curve
- Load inertia
- Supply voltage
- Operating conditions (maximum number of starts per hour)
- Installation environment conditions
- Control voltage



Use the WEG on-line [Soft Starter Sizing Assistant](#)





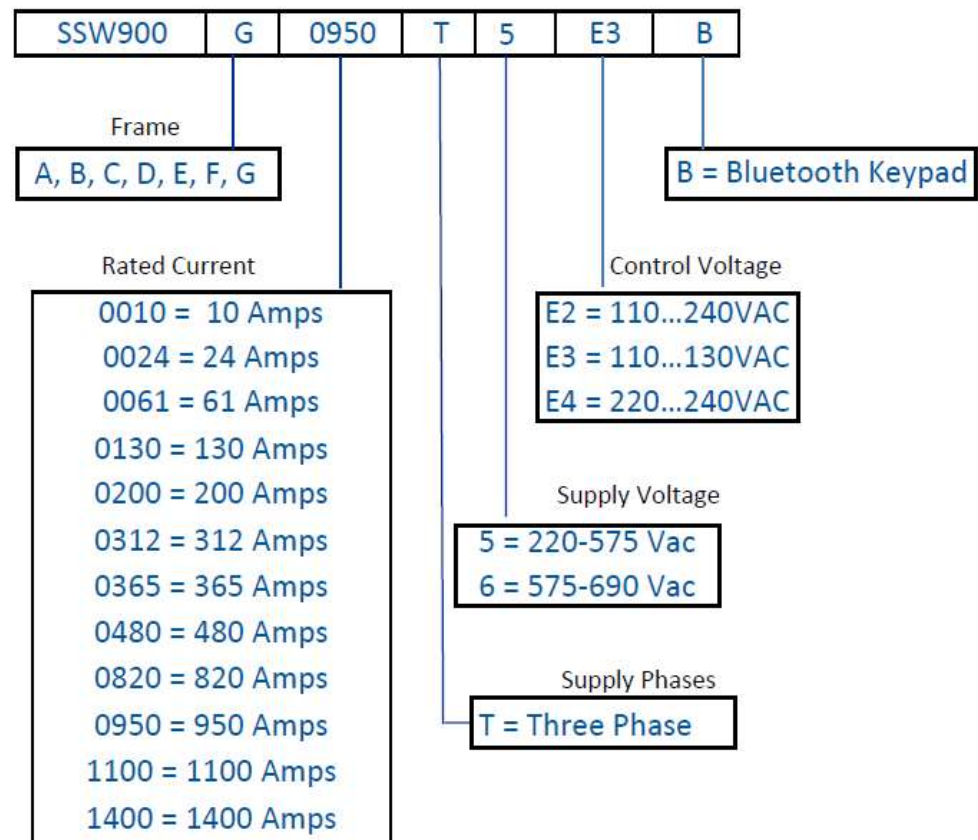
# Sizing and Selecting



[Access our  
Interactive  
Catalog on-line](#)

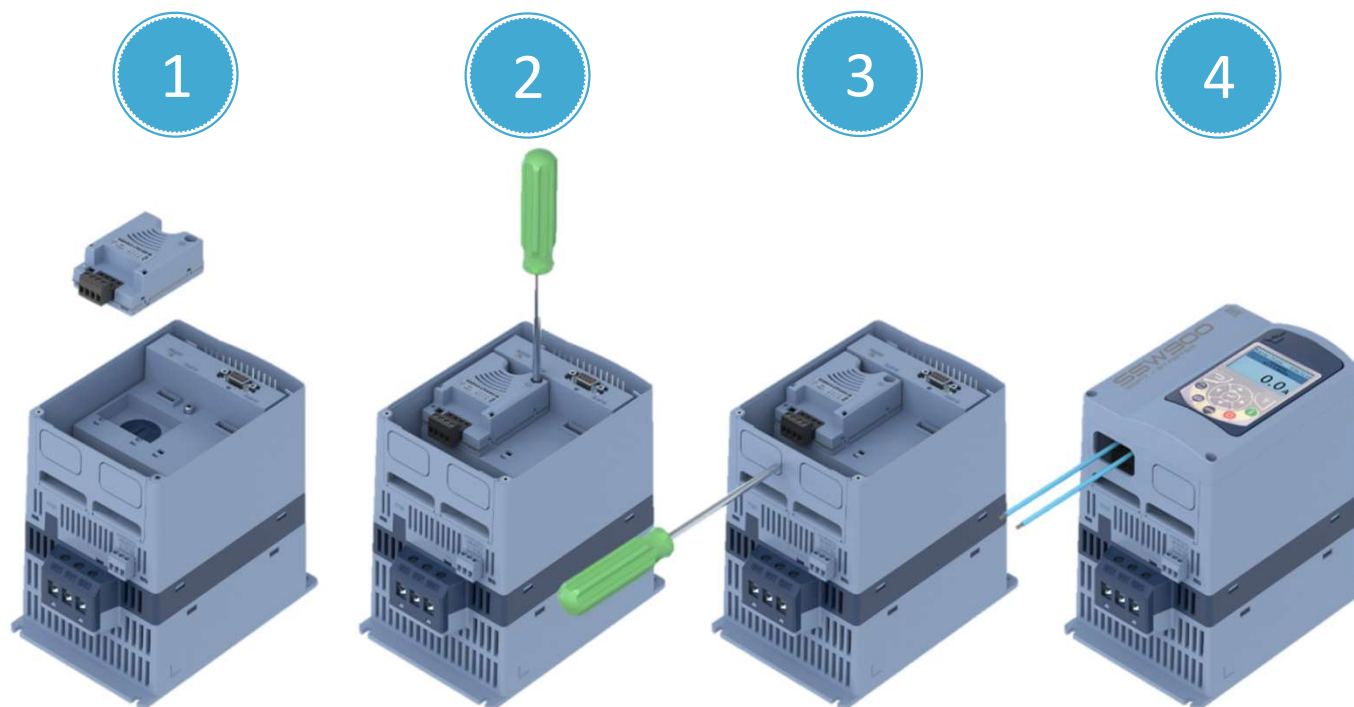


## SSW900 Catalog Number Sequence





# Accessories and Options



**Quick and Easy installation!**

# Accessories and Options



## Communications Options



RS485



Anybus DeviceNet



Anybus Profibus-DP



Anybus EtherNet/IP

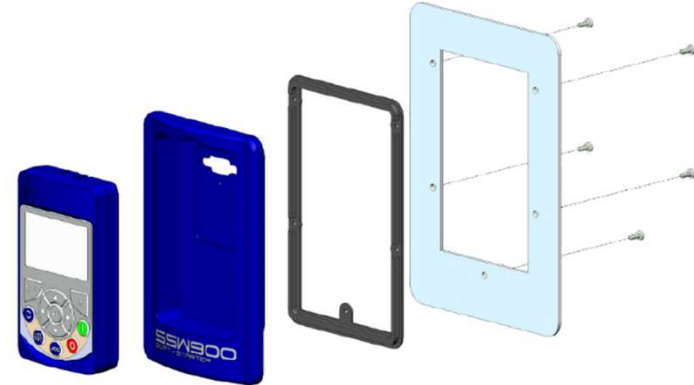


Anybus Modbus-TCP



Anybus Profinet IO

# Accessories and Options



## Additional Accessories Include:

- Remote Keypad Kit and Cables
- IP20, Power Terminal Cover, and Ventilation Kits
- Optional External Current Transformers
- Busbar Extension Kits
- SSW06 to SSW900 Adapter Plates

# Enclosed Solutions



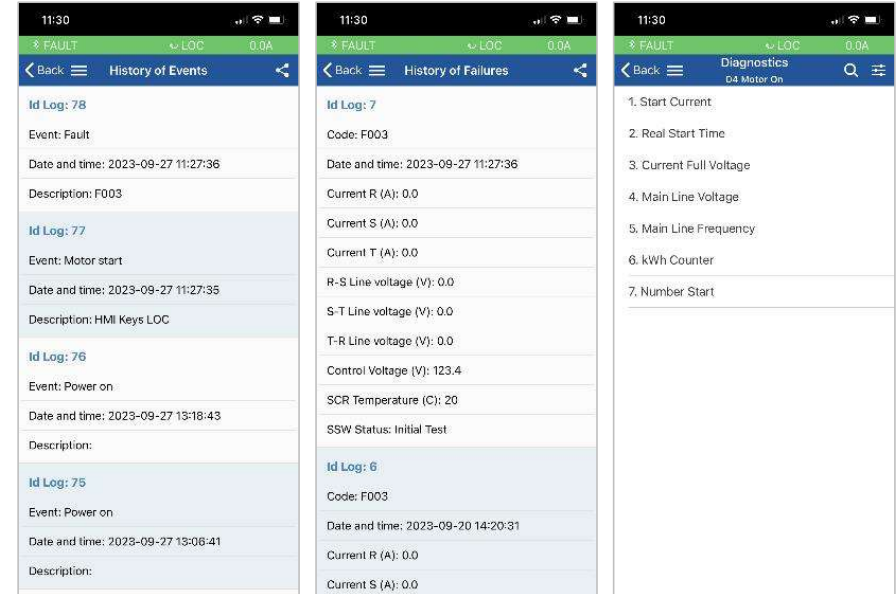
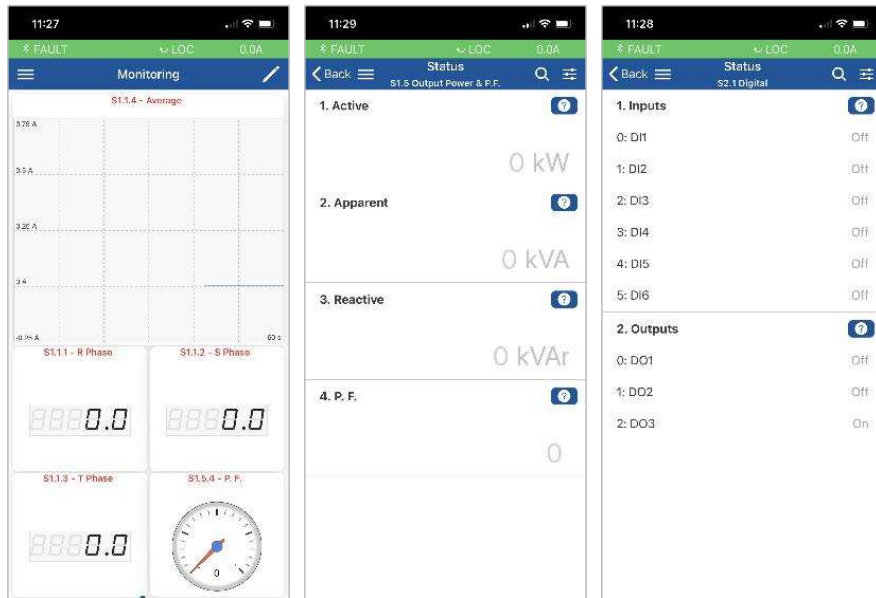
## **APS9 – All Purpose Soft Starter utilizing the SSW900 Soft Starters:**

- Utilizes SSW900 Soft Starter with integrated AC1 by-pass
- 65KA SCCR, Circuit Breaker, Through-Door Rotary Handle
- Service Entrance Rated
- Application Rated – able to be used for Normal Duty (350% for 30s 1.00 SF) or Heavy Duty (450% for 30s. 1.15 SF) based on Selection
- UL 3R/4/12 Heavy Duty Enclosure
- Compact Solution, Frames 1, 2 and 3 Wall Mountable (Optional Floor Mounting Kits Available)
- Full HP rated AC3 emergency bypass contactor with Class-30 overload relay helps to start and run
- “Soft Starter-off-Bypass” selector switch mounted inside an enclosure
- Fused Multi-tap Control Power Transformer (208/230/460VAC - 120VAC).
- Terminals for customer remote Start/Stop, External Interlock, “Motor running”, and “System Fault” Dry Contacts
- Enclosure door mounted Bluetooth Enabled Graphical Keypad and Extensive Array of Operators and Pilot Lights

# Advanced Monitoring and Diagnostics



- Graphical and Statistical Monitoring of System, Soft Starter, and Motor information
- Accessible via Graphical Keypad, WEG WPS PC Software, or WEG WPS Mobile App



- Event and Fault logging with time noted
- Ability to export and save logged data
- On-board Diagnostics

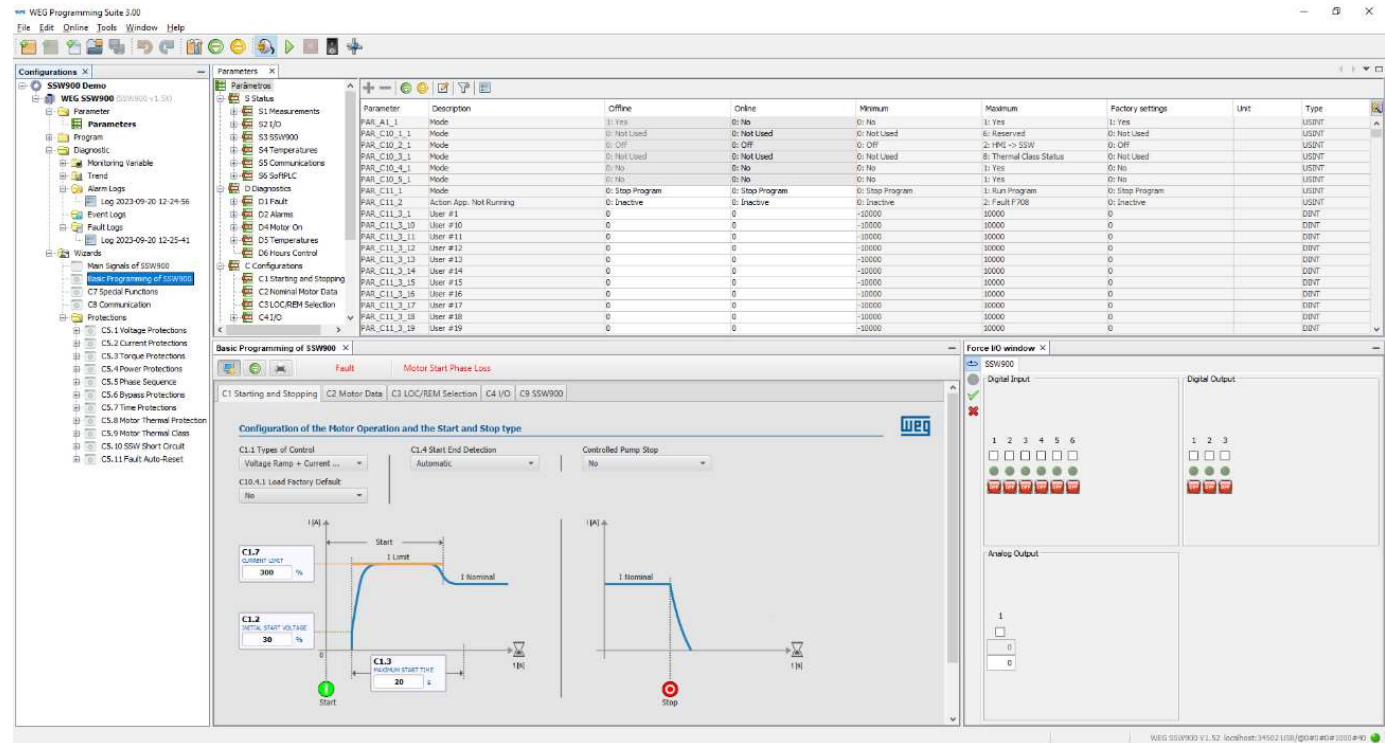
# Advanced Monitoring and Diagnostics



## WEG WPS PC Software

### Provides access to:

- All parameters and settings
- I/O Simulators
- Diagnostics and Trending
- Configuration Guides
- Firmware Updates
- SoftPLC Programming
- Available at no charge!







**WEG Electric Corp**  
1 800 ASK 4WEG (275-4934)  
info@weg.net

Thank you for your  
time and attention.



Transforming energy in solutions. [www.weg.net](http://www.weg.net)

