

WEG AUTOMATION

UNIVERSITY

2025

- Motors
- Automation
- Energy
- Transmission and Distribution
- Coatings



Driving efficiency and sustainability



WEG Automation University: Learn, Grow, Succeed!



At WEG Automation University, we are committed to empowering you with the knowledge and skills needed to excel in the world of automation. We cover various topics, from the latest WEG products to electrical basics, best practices, PLC programming, and everything in between. Our training programs are designed to cater to both beginners and experts, ensuring that everyone can benefit from our comprehensive courses

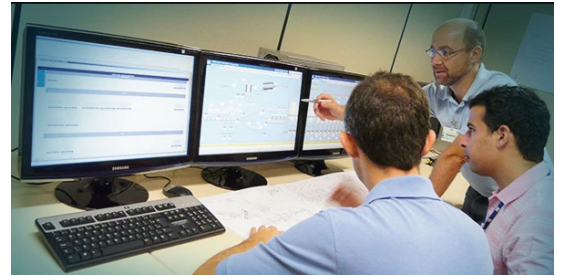
Why Training is Important

Enhanced Product Understanding: Gain an in-depth understanding of the products, enabling you to provide accurate information and recommendations to your customers.

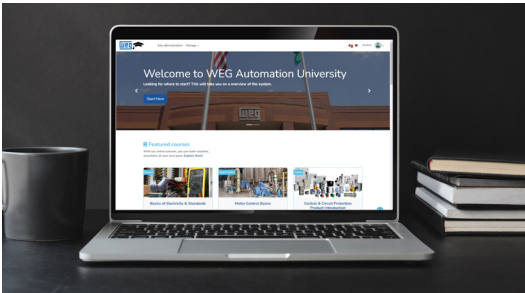
Technical Expertise: Enhance your technical skills to troubleshoot and support the products effectively, reducing downtime and increasing customer satisfaction.

Competitive Edge: Stay ahead of the competition by being well-versed in the latest technologies and best practices, making you a valuable resource for your customers.

Confidence: Boost your confidence in selling and working with the products, as you will be able to address customer queries and concerns with authority and expertise.



Online Training Opportunities



Our online training program at WEG Automation University is constantly evolving to meet the needs of our students. We offer a wide range of classes, adding new ones regularly. Offerings include Electrical Basics, How to Read an Electrical Drawing, Basics of Circuit Protection, Motor Basics, VFD Basics, product overviews, and many more. Whether you're just starting or looking to deepen your expertise, our comprehensive and ever-expanding course catalog ensures you'll find the training you need to succeed.

Are you looking to get access? Fill out the request: <https://wegconnect.net/register/>

Regional In-Person Training Opportunities

Our regional in-person training offers a unique hands-on learning experience at select locations throughout the USA. This immersive training requires some online coursework to be completed beforehand, ensuring students are well-prepared for the in-person sessions. Students gain practical, hands-on experience with WEG products during the training, guided by our expert instructors. This approach enhances understanding and builds confidence in using the products. Join us and take advantage of this invaluable opportunity to learn and grow.



For the current schedule for in person training, visit: <https://wegconnect.net/events>

Regional Training Course Information

Automation Products Selection and Sizing

COURSE GOAL / DESCRIPTION

This class is designed to equip you with the knowledge and skills to effectively select and size automation products. Throughout the course, you will learn how to build a combination starter, select the correct contactor, VFD, and soft start, and participate in hands-on labs to reinforce your learning.

DURATION: 1 Day

Student Profile

This training is for people looking to correctly size contactors, VFDs, and soft starts for motor control applications. It includes Inside Sales, Outside Sales, Product Specialists, and Engineers handling the design of control panels.

PREREQUISITES

The student completed the following online classes before attending training:

- All Basics of Electricity & Standards Classes
- All Motor Control Basics Classes
- WEG Easy
- WEG Control Product Overview
- WEG Drives and Soft Starter Overview
- SSW900 Product Overview
- CFW500 Product Overview
- CFW900 Product Overview

This is approximately ten (10) hours of online training.

COURSE OBJECTIVES

Upon completion of this course, students will be able to:

- Select the best motor control solution for your application.
- Properly size a VFD
- Properly size a soft starter
- Effective use of WEG Easy
- Learn available tools and resources to assist in specification and selling efforts.

TOPICS

- Selecting the correct contactor and accessories
- Assembling a contactor
- Selecting the correct variable frequency drive (VFD)
- Selecting the correct soft-starter
- Using WEG Easy

WHAT YOU NEED TO BRING

- A notebook PC with Microsoft Edge or Google Chrome installed.

Basic Drives & Soft Starters

COURSE GOAL / DESCRIPTION

This class provides hands-on training with the complete range of WEG variable frequency drives (VFDs) and soft start product offerings. Specific emphasis is focused on WEG Drive and Soft Start offerings. The class will give participants the fundamental understanding required to install and start-up WEG low-voltage Drives and Soft Starters.

DURATION: 2 Days

Student Profile

This is for Product Specialists and Controls Professionals looking for hands-on experience setting up drives.

PREREQUISITES

The student completed the following online classes before attending training:

- All Basics of Electricity & Standards Classes
- All Motor Control Basics Classes
- WEG WPS
- WEG Control Product Overview
- WEG Drives and Soft Starter Overview
- SSW05 Product Overview
- SSW07 Product Overview
- SSW900 Product Overview & Use and Install
- CFW11 Product Overview & Use and Install
- CFW320 Product Overview & Use and Install
- CFW500 Product Overview & Use and Install
- CFW900 Product Overview & Use and Install

This is approximately eighteen (18) hours of online training.

COURSE OBJECTIVES

Upon completion of this course, students will be able to:

- Control and operate the WEG family of drives and soft starters
- Understand and navigate the programming hierarchy
- Perform oriented start-ups
- Use of WEG WPS software
- Identify and troubleshoot faults

Optional: Authorized start-up for WEG Low Voltage Drives and Low Voltage Soft Starters. To participate, you must:

- Be an authorized WEG distributor, system integrator, or OEM.
- Complete the in-person hands-on test at the end of class. The test takes approximately 1 hour each. This means you will not complete your training until approximately 6 p.m. on the test day.
- Complete a computer-based test within 30 days of completing the class, which is an additional 1 hour.

WHAT YOU NEED TO BRING

- All materials will be provided.

TOPICS

- Drives (CFW320, CFW500, & CFW900 Focused)
- Soft-starters (SSW900 & SSW07 focused)
- HMI Navigation
- Oriented start-up
- Basic parameters
- Read-only parameters
- PID control
- Fault descriptions and troubleshooting
- Using WEG WPS software
- Soft Starter and VFD Start-up Check List





Regional Training Course Information

Pump Genius

COURSE GOAL / DESCRIPTION

This hands-on training course is designed to give participants a fundamental understanding of the configuration and application of WEG's Pump Genius. You will gain the skills needed to utilize this powerful tool effectively through practical exercises and real-world scenarios.

DURATION: 1 Day

Student Profile

This is for Product Specialists and Controls Professionals who have completed the "Basic Drives and Soft Starters" class and will be working with pump applications.

PREREQUISITES

The student must have completed the Basic Drives & Soft Starters in-person class before attending this.

The student completed the following online classes before attending training:

- WEG WLP
- Pump Genius Basics

This is approximately two (2) hours of online training.

COURSE OBJECTIVES

Upon completion of this course, students will be able to:

- Use of WEG WPS and WPL software for Pump Genius
- Load a program for simplex and multiplex Pump Genius program
- Run the CFW500 and CFW900 Pump Genius
- Wizard for Simplex and Multiplex systems
- Identify and troubleshoot faults

Optional: Authorized start-up for WEG Pump Genius. To participate, you must:

- Be an authorized WEG distributor, system integrator, or OEM.
- Complete the in-person hands-on test at the end of class. The test takes approximately 1 hour each. This means you will not complete your training until approximately 6 p.m. on the test day.
- Complete a computer-based test within 30 days of completing the class, which is an additional 1 hour.

WHAT YOU NEED TO BRING

- All materials will be provided.

TOPICS

- Overview of WEG WPS and WLP software
- Overview of the CFW500 and CFW900 Simplex System
- Overview of the CFW500 and CFW900 Multiplex System
- Programming of the Pump Genius
- Programming Wizard for CFW900 Multiplex 3-pump system

Networking and Communication

COURSE GOAL / DESCRIPTION

This hands-on training course is designed to give participants a fundamental understanding of the configuration of WEG drives on an Ethernet network. You will learn to set up and troubleshoot the drives on an Ethernet/IP network.

DURATION: 3 Hours

Student Profile

This is for Product Specialists and Controls Professionals looking for hands-on experience setting up Ethernet networking on the drives.

PREREQUISITES

The student completed the following online classes before attending training:

- All Basics of Electricity & Standards Classes
- All Motor Control Basics Classes
- WEG WPS
- WEG Drives and Soft Starter Overview
- CFW500 Product Overview & Use and Install
- CFW900 Product Overview & Use and Install

This is approximately Six (6) hours of online training.

COURSE OBJECTIVES

Upon completion of this course, students will be able to:

- Learn different types of network typologies
- Learn the common network communication protocols
- Applying Ethernet to the CFW500 and CFW900
- Setting up the CFW900 to work with an AOI

WHAT YOU NEED TO BRING

- All materials will be provided.

TOPICS

- Overview of Industrial Networking
- Setting up and troubleshooting Ethernet IP Networks
- Setting up a CFW500 and CFW900 to work with an AOI

Motion Fleet Management

COURSE GOAL / DESCRIPTION

COURSE GOAL / DESCRIPTION

This hands-on training course is designed to help participants understand the configuration and use of WEG Motion Fleet Management.

DURATION: 1 Hour

Student Profile

This is for Product Specialists and Controls Professionals looking for hands-on experience setting up and using Motion Fleet Management.

PREREQUISITES

The student completed the following online classes before attending training:

- All Basics of Electricity & Standards Classes
- All Motor Control Basics Classes
- WEG Drives and Soft Starter Overview
- CFW500 Product Overview & Use and Install
- CFW900 Product Overview & Use and Install

COURSE OBJECTIVES

Upon completion of this course, students will be able to:

- Learn how to navigate Motion Fleet Management
- How to add a device to Motion Fleet Management
- How to run reports in Motion Fleet Management

Learn how WEGsense® technology can detect incipient mechanical failures.

WHAT YOU NEED TO BRING

- A notebook PC with Microsoft Edge or Google Chrome installed.

TOPICS

- Asset tree for organizing hierarchy (customer account, units, plants, assets) and measurement points
- Registration of equipment
- Visualization of assets on geographic maps, in an asset tree and multi-level navigation
- Daily notifications of assets in alert and/or critical state